



[Home](#)   [About](#)  
[Contact](#)



# Saleen 800 Horsepower S302 'Black Label' Mustang

April 2020 • By Tony Thacker

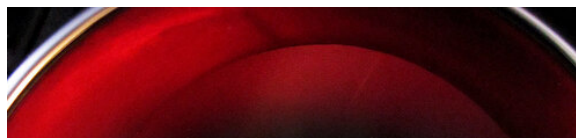


If nothing else, Steve Saleen has staying power—it's extremely difficult to survive in the cutthroat world of auto racing, modified production cars and specialty vehicles—and yet Saleen has been in business almost 40 years. Steve grew up in Southern California, worked for his father's manufacturing business and got interested in fast cars when his father purchased a Porsche. He joined the Porsche Owner's Club and went club racing where he did well, however, his first win came in 1973 in a B Production Shelby Mustang at Riverside Raceway, that began a lifelong association with Ford's Pony car.

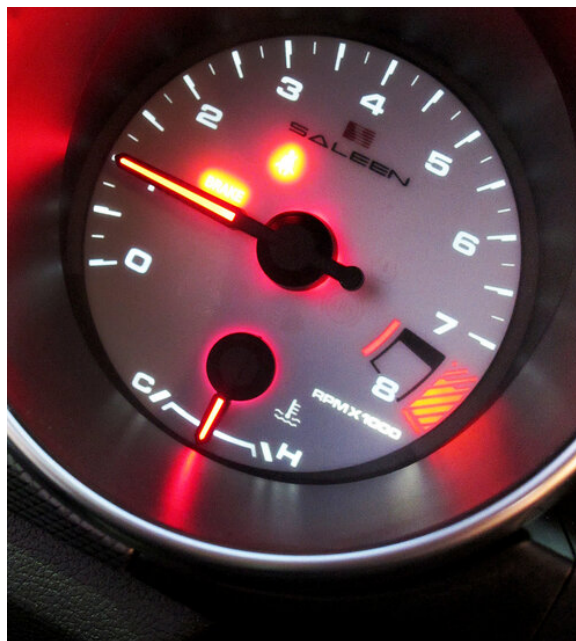


***Steve Saleen's first win came in 1973 in a B Production Shelby Mustang at Riverside Raceway, that began a lifelong association with Ford's Pony car.***

Steve progressed from B production to open wheel racing



then to the Trans Am racing series. While racing in Trans Am, Steve developed a rapport with Ford Motor Co., and soon the two parties were meeting regularly to discuss a special-edition Mustang. Ford had it's own SVO Mustang but Steve's would be a little more race inspired. In 1986, Saleen Autosport finished first in class at the Mosport 24-hour. They sold 290 units that year, however, they had orders for 1,000. The problem was Ford could sell all the Mustangs it could build and what did they need Saleen for? It's this dichotomy that plagues all specialty vehicle manufacturers—balancing your business with that of the manufacturer.



Over the past thirty-plus years, Saleen has weathered numerous storms including recessions, 9-11 and even the recent Corona virus which is ironic as its headquarters is off the 91 Freeway in Corona, CA. TT recently toured the state-of-the-art facility to check out Steve's latest Mustang-based, race-inspired hot rod—the 'Black Label' S302.

The S302 is available as a fastback and a convertible and there are three option levels of each: The basic 475 hp White Label, the 740 hp Yellow Label and the top-of-the-line, wicked 800 hp Black Label. Torque figures are equally impressive with the White delivering 430-, the Yellow 610- and the Black 630 lb-ft.





***The S302 is available as a fastback and a convertible and there are three option levels of each: The basic 475 hp White Label, the 740 hp Yellow Label and the top-of-the-line, wicked 800 hp Black Label.***



It's a gorgeous beast, tough and purposeful but not overstated, from front to rear the air is managed for maximum performance. There are spoilers, scoops, side skirts and a rear wing, much of it carbon fiber but none of it exaggerated, none of it designed for the sake of it, it's all functional. Indeed, it follows that old design adage; form follows function and in the case of the race-developed Saleen Black Label 302 Mustang the function is to go fast.

## Tech Specs

### Engine:

- High-performance calibration
- Low-pressure-drop intercoolers
- High-volume intercooler water pump with remote, external heat exchanger
- 47 lb fuel injectors
- Cold-air induction with high-performance air filter
- Saleen 3-inch exhaust with high-performance mufflers
- Saleen carbon fiber exhaust tips
- 6-speed MT-82 manual transmission with synchronized, short-throw shift
- Limited slip differential with 3.55:1 final gear ratio



### Body:

- Front fascia with high-volume radiator intake

- Front air vane with static brake cooling
- High-downforce air splitter
- Induction hood with dual heat extractors
- Black label axial front grille
- Competition vented front fenders
- Side skirts with integrated intakes
- High downforce rear wing
- High downforce rear diffuser

### **Suspension**

- Racecraft specific rate front and rear springs
- Racecraft struts and rear shocks
- Racecraft front and rear sway bars
- High-durometer sway bar pivot bushings

### **Brakes:**

- F: 13.9-inch ABS slotted front rotors w/4-piston calipers w/high-performance pads
- R: 13-inch ABS vented rotors with single piston calipers

### **Wheels:**

- Saleen specific 5-spoke

### **Tires:**

- High-performance Continental Z-rated tires

**Comments (0)**

Newest First    [Subscribe via e-mail](#)